

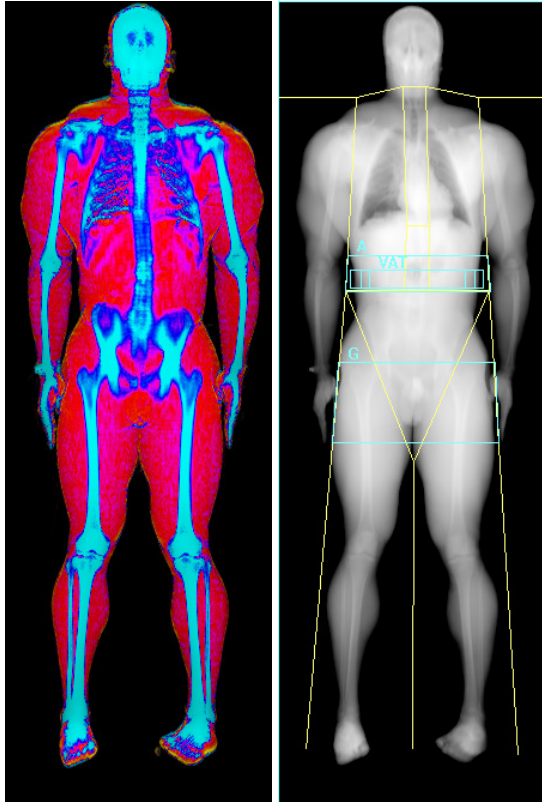
Sample Report DEXA Scan



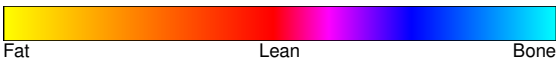
Name: Patient, Sample
Patient ID: 01
DOB: Jan 1, 2020

Sex: Male
Ethnicity: White

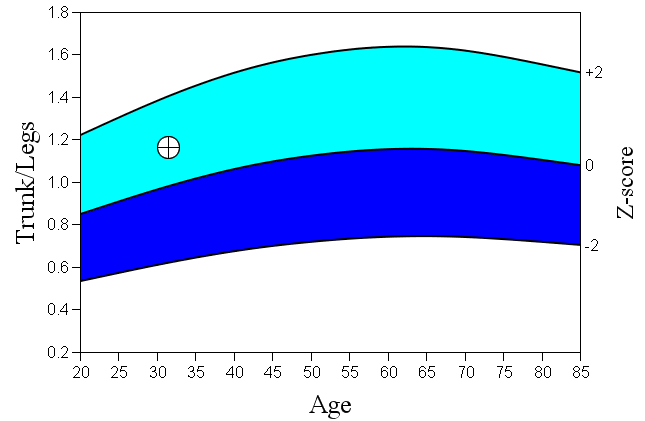
Height: 70.0 in
Weight: 240.0 lb
Age: 31



Images not for diagnostic use

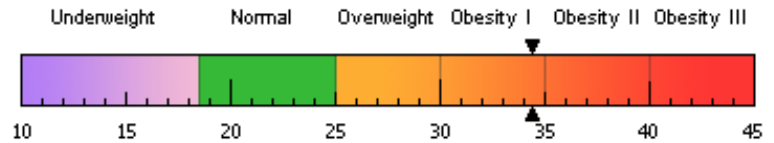


% Fat Trunk/% Fat Legs



Source: NHANES Classic White Male.

World Health Organization Body Mass Index Classification
BMI = 34.4 WHO Classification Obesity I



BMI has some limitations and an actual diagnosis of overweight or obesity should be made by a health professional. Obesity is associated with heart disease, certain types of cancer, type 2 diabetes, and other health risks. The higher a person's BMI is above 25, the greater their weight-related risks.

Body Composition Results

Region	Fat Mass (lb)	Lean + BMC (lb)	Total Mass (lb)	% Fat	T-score	% Fat	Z-score
L Arm	0.74	17.76	18.50	3.98	-3.2		-3.5
R Arm	1.10	19.66	20.76	5.28	-2.9		-3.2
Trunk	4.89	99.17	104.05	4.70	-2.5		-2.7
L Leg	1.76	37.03	38.79	4.54	-3.1		-3.4
R Leg	1.39	37.74	39.12	3.54	-3.5		-3.7
Subtotal	9.87	211.36	221.23	4.46	-2.8		-3.1
Head	2.22	10.05	12.26	18.1			
Total	12.08	221.41	233.49	5.17	-2.9		-3.2
Android (A)	0.76	15.46	16.22	4.7			
Gynoid (G)	2.10	35.29	37.39	5.6			

Scan Date: November 03, 2019 ID: A1103190C
Scan Type: a Whole Body
Analysis: November 03, 2019 09:49 Version 13.5.3.2
Auto Whole Body
Operator:
Model: Discovery W (S/N 82736)
Comment:

Adipose Indices

Measure	Result	T-score	Z-score
Total Body % Fat	5.17	-2.9	-3.2
Fat Mass/Height ² (kg/m ²)	1.73	-2.3	-2.5
Android/Gynoid Ratio	0.83		
% Fat Trunk/% Fat Legs	1.16	1.3	0.9
Trunk/Limb Fat Mass Ratio	0.98	0.0	-0.4
Est. VAT Mass (g)	166		
Est. VAT Volume (cm ³)	179		
Est. VAT Area (cm ²)	34.4		

Lean Indices

Measure	Result	T-score	Z-score
Lean/Height ² (kg/m ²)	30.6	2.7	2.7
Appen. Lean/Height ² (kg/m ²)	15.5	3.1	3.2

Est. VAT = Estimated Visceral Adipose Tissue